

### Adult Felony and Misdemeanor Probation Cases - 1999

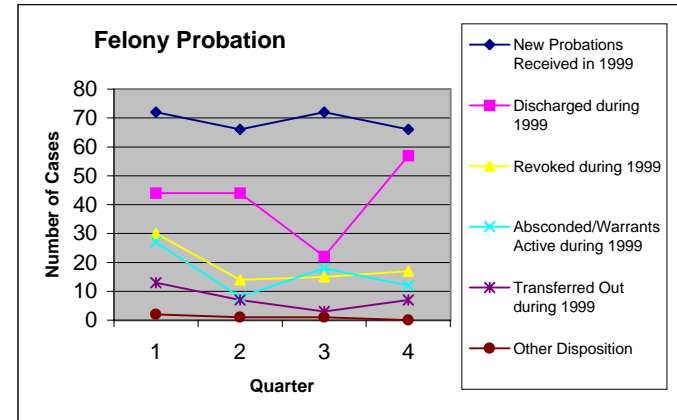
[Source: 1999 Morgan County Probation Reports filed with Division of State Court Administration]

#### Adult Felony Cases - 1999

	1st QTR	2nd QTR	3rd QTR	4th QTR	Totals
<b>Pending as of 1/1/99</b>					<b>519</b>
New Probations Received in 1999	72	66	72	66	276
Discharged during 1999	44	44	22	57	167
Revoked during 1999	30	14	15	17	76
Absconded/Warrants Active during 1999	27	8	18	12	65
Transferred Out during 1999	13	7	3	7	30
Other Disposition	2	1	1	0	4

**Pending as of 12/31/99** **453**

Percentage Discharged compared to Pending + New Probations Received: **21%**  
 Percentage Revoked compared to Pending + New Probations Received: **10%**  
 Percentage Absconded compared to Pending + New Probations Received: **8%**



#### Adult Misdemeanor Cases - 1999

	1st QTR	2nd QTR	3rd QTR	4th QTR	Totals
<b>Pending as of 1/1/99</b>					<b>386</b>
New Probations Received in 1999	139	180	166	114	599
Discharged during 1999	107	87	62	109	365
Revoked during 1999	14	26	30	11	81
Absconded/Warrants Active during 1999	26	19	10	10	65
Transferred Out during 1999	2	2	11	10	25
Other Disposition	0	1	1	0	2

**Pending as of 12/31/99** **447**

Percentage Discharged compared to Pending + New Probations Received: **37%**  
 Percentage Revoked compared to Pending + New Probations Received: **8%**  
 Percentage Absconded compared to Pending + New Probations Received: **7%**

