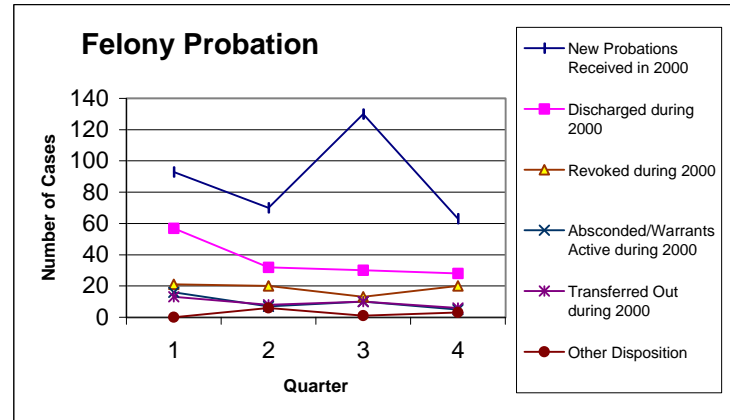


## Adult Felony and Misdemeanor Probation Cases - 2000

[Source: 2000 Morgan County Probation Reports filed with Division of State Court Administration]

### Adult Felony Cases - 2000

	1st QTR	2nd QTR	3rd QTR	4th QTR	Totals
<b>Pending as of 1/1/2000</b>					<b>453</b>
New Probations Received in 2000	93	70	130	63	356
Discharged during 2000	57	32	30	28	147
Revoked during 2000	21	20	13	20	74
Absconded/Warrants Active during 2000	16	7	10	5	38
Transferred Out during 2000	13	8	10	6	37
Other Disposition	0	6	1	3	10
<b>Pending as of 12/31/2000</b>					<b>503</b>
Percentage Discharged compared to Pending + New Probations Received:					18%
Percentage Revoked compared to Pending + New Probations Received:					9%
Percentage Absconded compared to Pending + New Probations Received:					5%



### Adult Misdemeanor Cases - 2000

	1st QTR	2nd QTR	3rd QTR	4th QTR	Totals
<b>Pending as of 1/1/2000</b>					<b>447</b>
New Probations Received in 2000	159	126	185	148	618
Discharged during 2000	130	113	88	117	448
Revoked during 2000	16	31	28	24	99
Absconded/Warrants Active during 2000	13	3	2	4	22
Transferred Out during 2000	9	11	8	11	39
Other Disposition	2	1	3	2	8
<b>Pending as of 12/31/2000</b>					<b>449</b>
Percentage Discharged compared to Pending + New Probations Received:					42%
Percentage Revoked compared to Pending + New Probations Received:					9%
Percentage Absconded compared to Pending + New Probations Received:					2%

