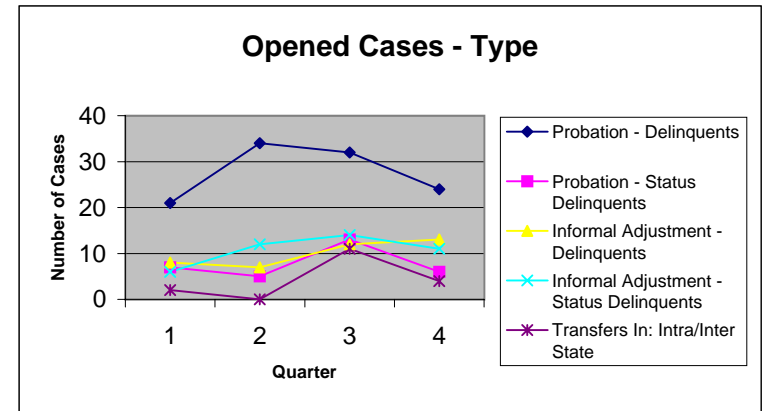


Juvenile Delinquency Probation Cases - 1999

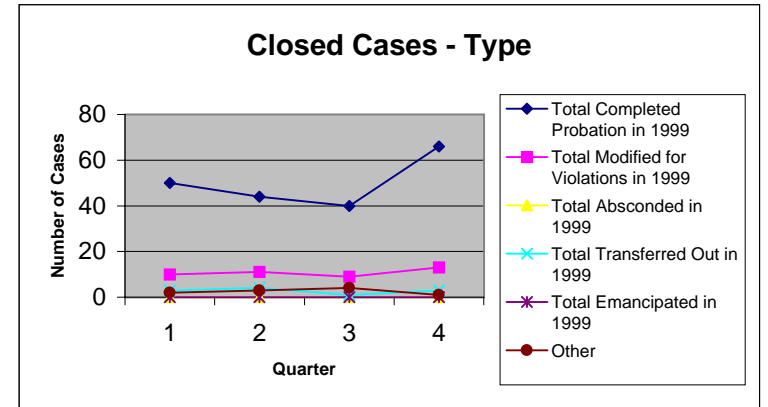
1999 Juvenile Probation

[Source: 1999 Morgan County Probation Reports filed with Division of State Court Administration]

	<u>1st QTR</u>	<u>2nd QTR</u>	<u>3rd QTR</u>	<u>4th QTR</u>	<u>Totals</u>
Supervisions Pending as of 1/1/99					152
Supervisions Opened					
Probation - Delinquents	21	34	32	24	111
Probation - Status Delinquents	7	5	13	6	31
Informal Adjustment - Delinquents	8	7	12	13	40
Informal Adjustment - Status Delinquents	6	12	14	11	43
Transfers In: Intra/Inter State	2	0	11	4	17
Total Received:	44	58	82	58	242
Percentage Referred to Formal Probation					59%
Percentage Referred to Informal Adjustment					34%



Supervisions Closed/Inactive					
Total Completed Probation in 1999	50	44	40	66	200
Total Modified for Violations in 1999	10	11	9	13	43
Total Absconded in 1999	0	0	0	0	0
Total Transferred Out in 1999	3	4	1	3	11
Total Emancipated in 1999	0	0	0	0	0
Other	2	3	4	1	10
Total Closed/Inactive:	65	62	54	83	264



Supervisions Pending as of 12/31/99		130
Percentage Completed Probation	76%	
Percentage Modified for Violations	16%	