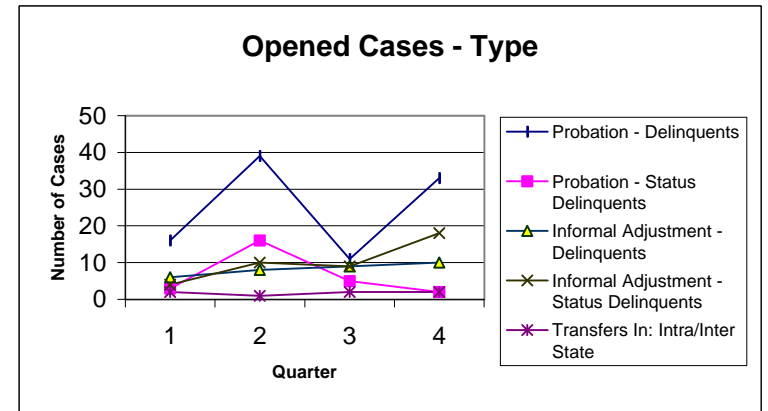


# Juvenile Delinquency Probation Cases - 2000

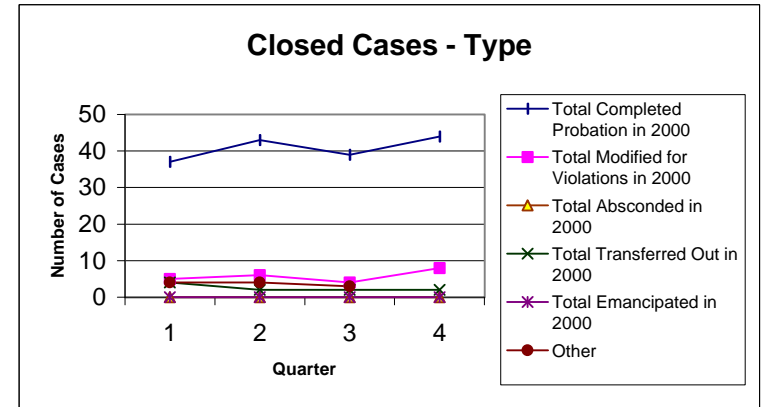
2000 Juvenile Probation

[Source: 2000 Morgan County Probation Reports filed with Division of State Court Administration]

	<u>1st QTR</u>	<u>2nd QTR</u>	<u>3rd QTR</u>	<u>4th QTR</u>	<u>Totals</u>
<b>Supervisions Pending as of 1/1/2000</b>					<b>130</b>
<b>Supervisions Opened</b>					
Probation - Delinquents	16	39	11	33	99
Probation - Status Delinquents	3	16	5	2	26
Informal Adjustment - Delinquents	6	8	9	10	33
Informal Adjustment - Status Delinquents	4	10	9	18	41
Transfers In: Intra/Inter State	2	1	2	2	7
<b>Total Received:</b>	<b>31</b>	<b>74</b>	<b>36</b>	<b>65</b>	<b>206</b>
<b>Percentage Referred to Formal Probation</b>					64%
<b>Percentage Referred to Informal Adjustment</b>					36%



<b>Supervisions Closed/Inactive</b>					
Total Completed Probation in 2000	37	43	39	44	163
Total Modified for Violations in 2000	5	6	4	8	23
Total Absconded in 2000	0	0	0	0	0
Total Transferred Out in 2000	4	2	2	2	10
Total Emancipated in 2000	0	0	0	0	0
Other	4	4	3		11
<b>Total Closed/Inactive:</b>	<b>50</b>	<b>55</b>	<b>48</b>	<b>54</b>	<b>207</b>



<b>Supervisions Pending as of 12/31/2000</b>					
<b>Percentage Completed Probation</b>					79%
<b>Percentage Modified for Violations</b>					11%